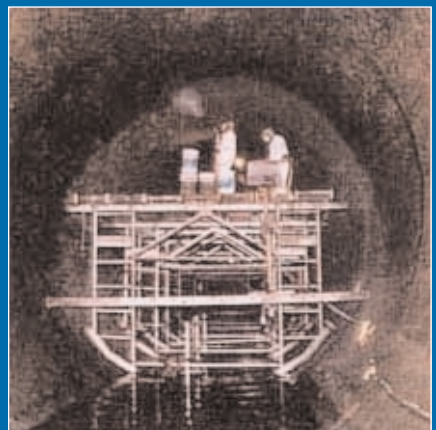


Tunnels Worldwide

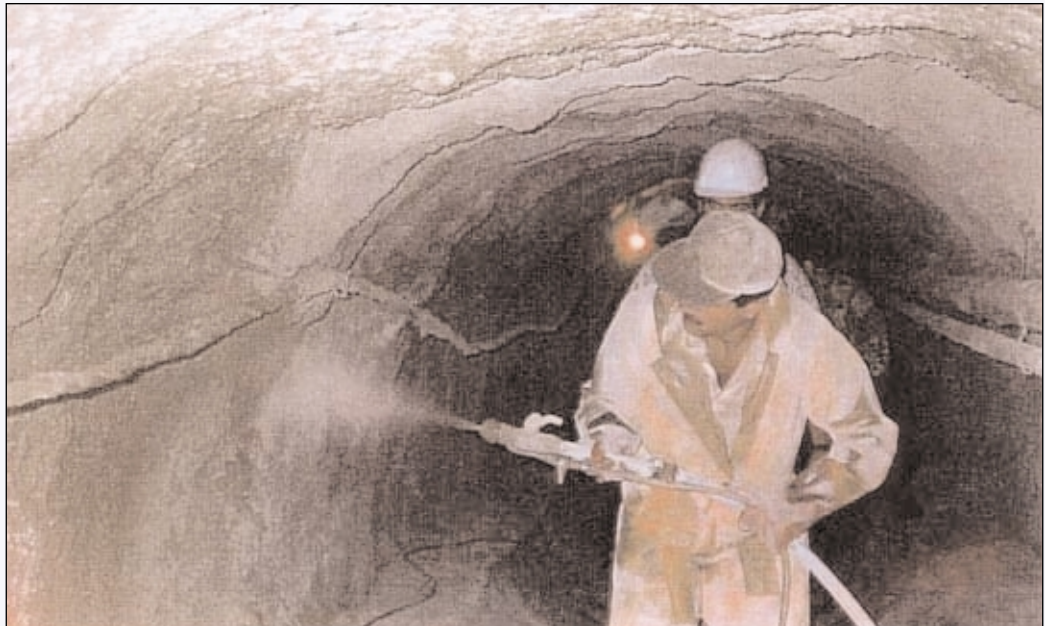
XYPEX®

T u n n e l s



**Worldwide applications methods including:
crack repair, shotcrete, precast and Admix**

- **Madeira Islands Sewer Tunnel** *Madeira Islands Portugal*



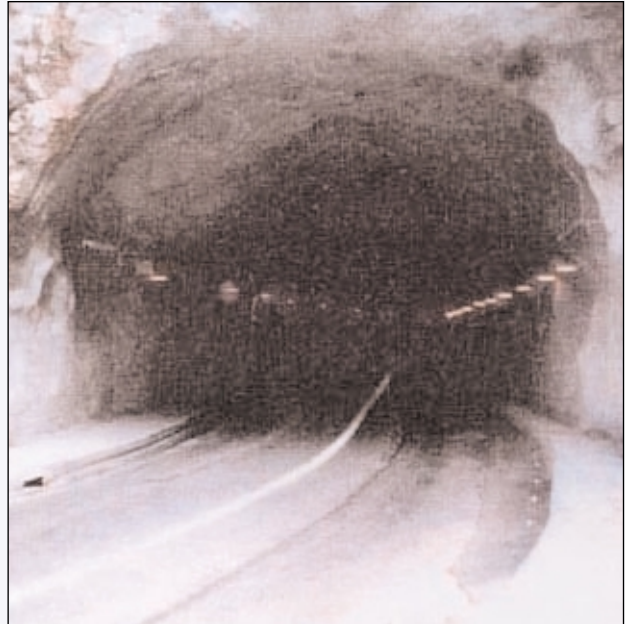
- Over 20,00 lbs. of Xypex Concentrate and Modified were spray applied to shotcrete. Stopped all water infiltration & provide protection to the concrete from H₂S.

- **Aomori** *Aomori City, Japan*



- Xypex Concentrate was applied to existing deteriorated concrete box culvert. Admix the was used in new tunnel lining.

- **Susten Pass Tunnel** *Berne, Switzerland*



- Repair 30 year old, 105 m tunnel using Concentrate & Modified White. Old concrete was removed and replaced with shotcrete.

- **Rinkai Road Tunnel** *Tokyo, Japan*



- Special “U” shaped, “cut & cover construction design”, involved application of Xypex coatings to 30,000 m2.

- **Sydney Harbour** *Australia*



- Extensive crack repair using Concentrate & Patch'n Plug to seal water seepage.

- **Janio Quadros & Sebastiao Camargo** *Sao Paulo, Brazil*



- The shotcrete lining of two parallel tunnels were treated with 2,600 sq. metres of Concentrate & Modified. Patch'n Plug was used to repair more than 1,700 defects in the concrete.